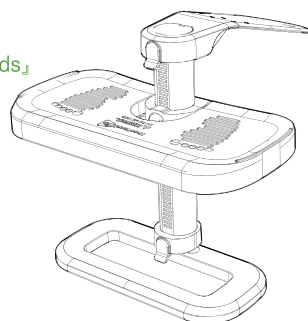




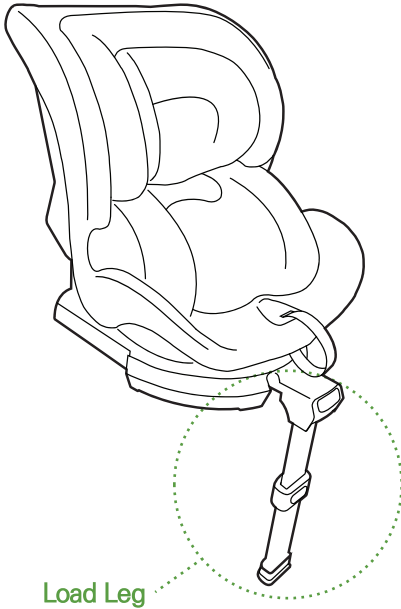
Knee Protection for Kids
Car Seat Footrest "KneeGuardKids"



KneeGuardKids 4

Instruction Manuals

Notice



! Warning

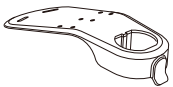
- This product is not a protection gear to protect occupant from a car accident.
- **Do not use as a step to get into the car seat.**
- Do not stand on the footrest.

i Caution

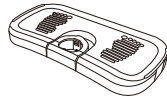
- **This product can not be used for car seats with a Load Leg (See illustration on the left).**
(※ If you can not use this, please do not open the package and contact us.)
- Mount firmly and securely using the LATCH Hooks or Installation Clips.
- Enter or exit the vehicle only after fully folding the Footplate.
- Height and angle adjustment should be adjusted by an adult when the vehicle is not in motion.
- For your safety, be sure to understand this instruction manual thoroughly.

Box Contents

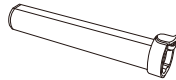
· Please ensure all the contents below are present before using.



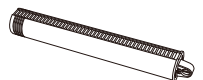
1 Installation Plate



1 Footplate

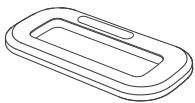


1 Height Control Bar

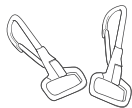


1 Load Leg

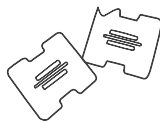
※ The Height Control Bar and the Load Leg come assembled.



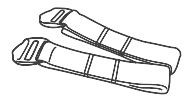
1 Bottom Plate



2 LATCH Hooks

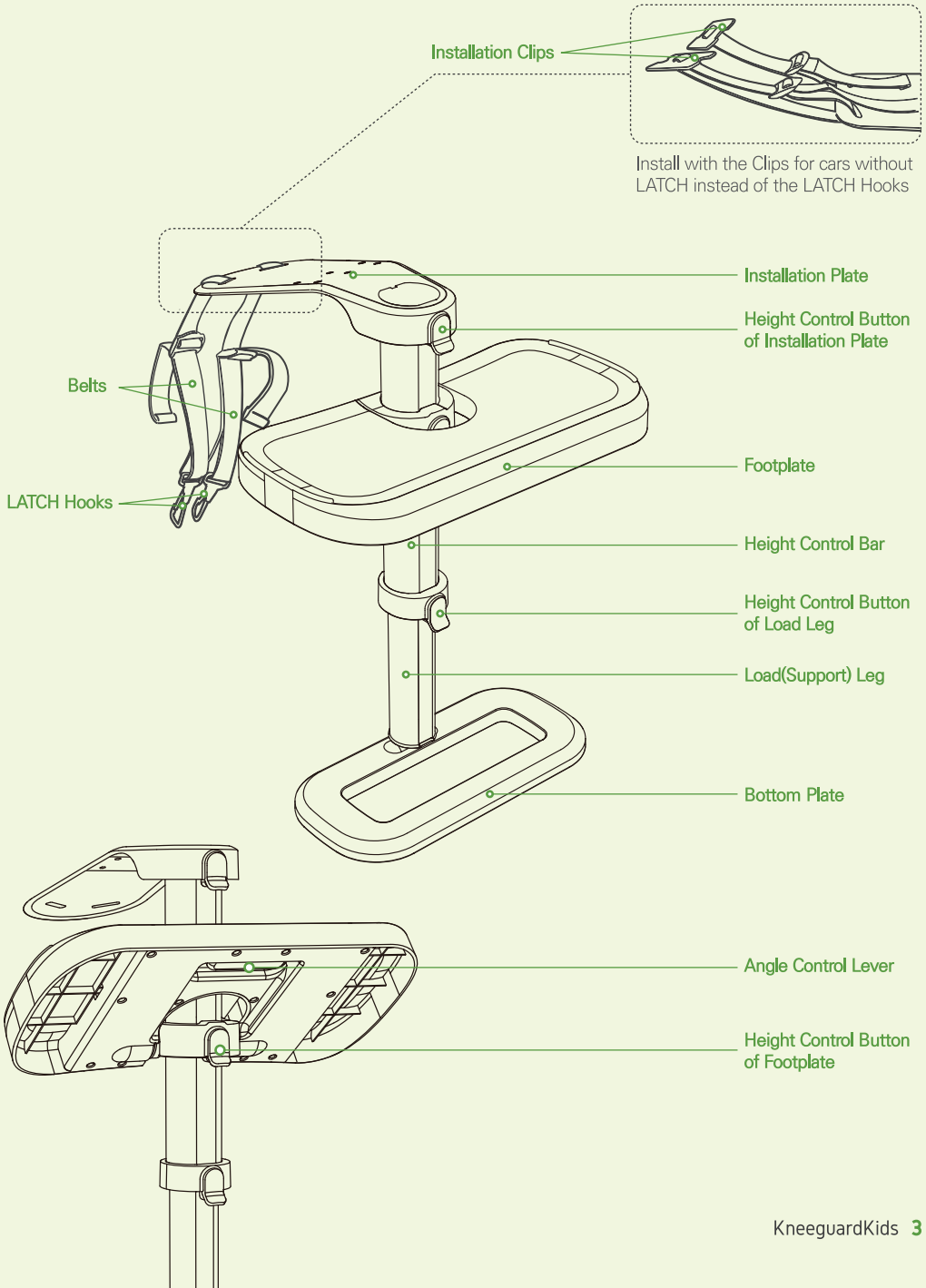


2 Installation Clips



2 Belts

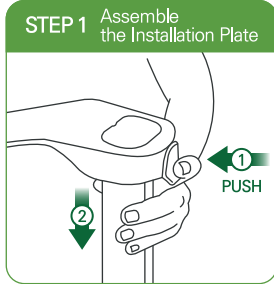
Components of KGK4



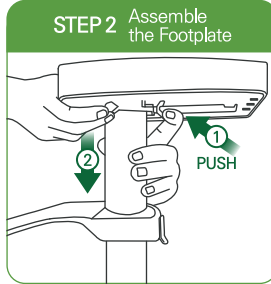
Assembly

• For Infant & Convertible Car Seat (Ages 3 and under)

※ Set up the Installation Plate first, then the Footplate, this will allow the child's feet to reach the Footplate as its in a higher position.



While pressing the Height Control Button of the Installation Plate, insert the Installation Plate from top to bottom.

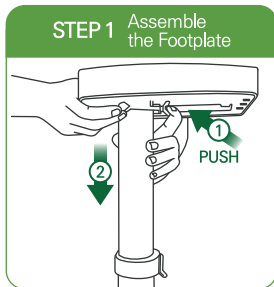


While pressing the Height Control Button of the Footplate, insert the Footplate from top to bottom.

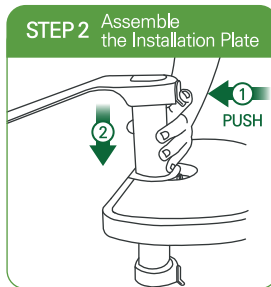


Insert the Bottom Plate under the Load Leg.
(※ For safety, once inserted, the Bottom Plate cannot be take out again.)

• For Booster & Junior Car Seat (Ages 4 and over)



While pressing the Height Control Button of the Footplate, insert the Footplate from top to bottom.



While pressing the Height Control Button of the Installation Plate, insert the Installation Plate from top to bottom.

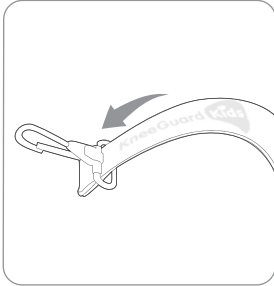


Insert the Bottom Plate under the Load Leg.
(※ For safety, once inserted, the Bottom Plate cannot be take out again.)

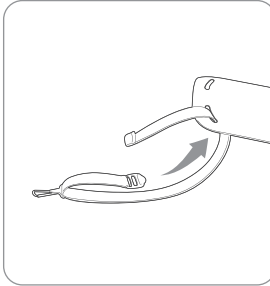
Installation

• Cars with LATCH (Installation with the LATCH Hooks)

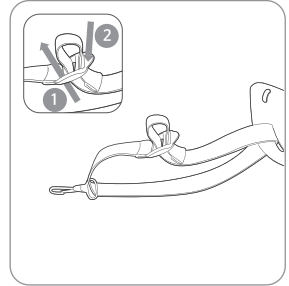
STEP 1



Hold the Belt with the engraved logo facing you, and insert it to the LATCH Hook from top to bottom.

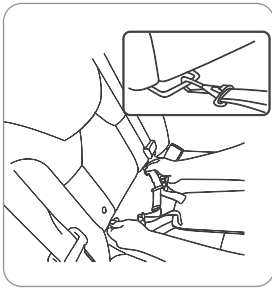


Insert the Belt through the back of the Installation Plate from bottom to top.

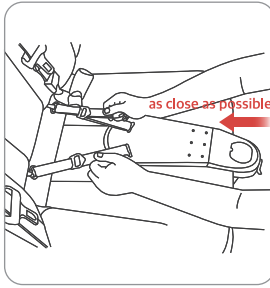


Insert the Belt into the adjustable buckle.
(※ Please follow the steps as pictured in the illustration above.)

STEP 2



Place the LATCH Hooks from top to bottom on the LATCH.



Place the Height Control Bar close to the vehicle seat and fasten the Belts. Adjust straps so that the Installation Plate is snug on the seat. See illustration above.
(※ If the Height Control Bar is not firmly connected to the vehicle seat, the Footplate may be unsteady.)

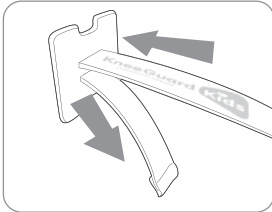


After installing the car seat on the Installation Plate, adjust the height of the Footplate and the Load Leg for the comfort level of your child.
(※ Please refer to page 7 for a detailed height adjustment method.)

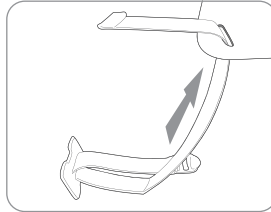
Installation

• Cars without LATCH (Installation with the Installation Clips)

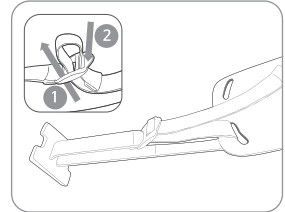
STEP 1



Hold the Belt with the engraved logo facing you, and insert it in the top gap of the Installation Clip. Then pull it out through the bottom gap.

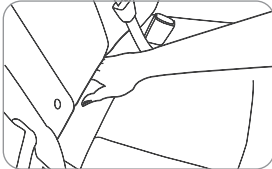


Insert the Belt through the back of the Installation Plate from bottom to top.



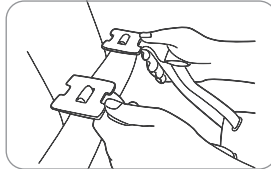
Insert the Belt into the adjustable buckle.
(※ Please follow the steps as pictured in the illustration above.)

STEP 2

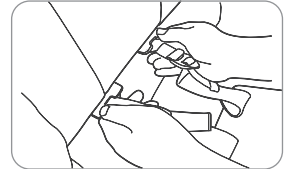


Insert your hand in the gap between the cushion and the back of the vehicle seat to ensure there is adequate space for the Installation Clips.

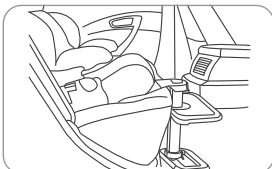
(※ Be cautious when inserting your hand and take care not to get hurt.)



Hold the Installation Clips horizontally, facing upside.

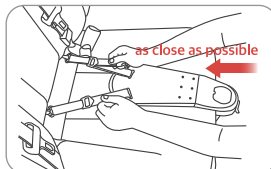


Insert the Installation Clips into the gap as shown while keeping them face-down.



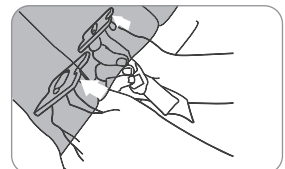
After installing the car seat on the Installation Plate, adjust the height of the Footplate and the Load Leg for the comfort level of your child.

(※ Please refer to page 7 for a detailed height adjustment method.)



Place the Height Control Bar close to the vehicle seat and fasten the Belts. Adjust straps so that the Installation Plate is snug on the seat. See illustration above.

(※ If the Height Control Bar is not firmly connected to the vehicle seat, the Footplate may be unsteady.)

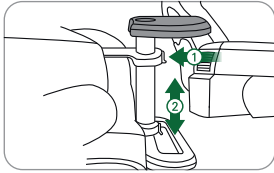


Push the Installation Clips horizontally as far as you can, then push them and position them vertically.

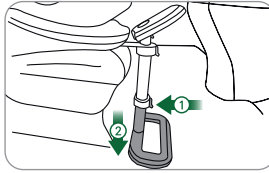
(※ If you can not turn the Clips upright, push the Installation Clips further downward.)

Height Adjustment

• For Infant & Convertible Car Seat (Ages 3 and under)

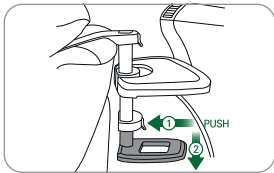


While pressing the Height Control Button of the Installation Plate, adjust height of the Footplate to match the feet of the child.

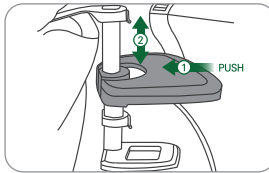


While pressing the Height Control Button of the Load Leg, adjust height of the Load Leg to reach the floor of the vehicle.

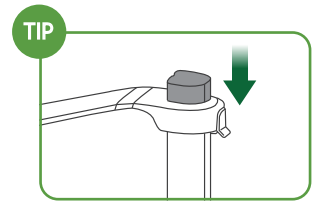
• For Booster & Junior Car Seat (Ages 4 and over)



While pressing the Height Control Button of the Load Leg, adjust height of Load Leg to reach the floor of the vehicle.



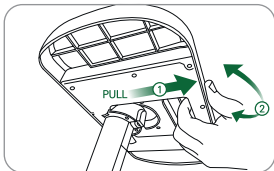
While pressing the Height Control Button of Footplate, adjust height of Footplate to match the feet of the child.



TIP

If your vehicle's seat is lower than others, assemble the Installation Plate to low position of the Height Control Bar.

Angle Adjustment



While pulling the Angle Control Lever at the bottom of the Footplate, raise or lower the Footplate to adjust the angle to the desired angle. The angle is adjusted in 15 degree increments.

TIP



When using the infant car seat, the sole is inclined by about 30degrees, so it is more comfortable for infants to adjust angle of the Footplate to 30 degrees.

KneeGuard Kids

KneeGuardKids, a knee protection Car Seat Footrest that protects the knee and growth plate from gravity pulling the leg.

Specifications

Product	Car Seat Footrest
Model	KneeGuardKids 4
Recommended Age	1 ~ 9 years (less than 30kg)
Dimensions	Installation Plate 340 × 130 × 60 / Footplate 380 × 200 × 32 / Height Control Bar 65 × 80 × 325 / Load Leg 47 × 42 × 315 / Bottom Plate 315 × 150 × 210 (mm)
Weight	1.5kg
Materials	ABS, PP, PC
Country of Origin	China OEM (Created & Designed in South Korea)

Warranty

- This product is manufactured under strict quality control process.
- The KneeGuardKids 4 comes with 6 month warranty against manufactures defects from date of purchase.
- Warranty claims can be sent to info@ingarden.net



inGarden Corporation

#520, Cheonggye Tower, 53, Seonggogae-ro, Uiwang-si, Gyeonggi-do, 16006, South Korea
TEL 82-2-6049-4909 | FAX 82-505-312-1234 | E-MAIL info@ingarden.net



www.kneeguardkids.com